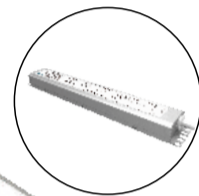
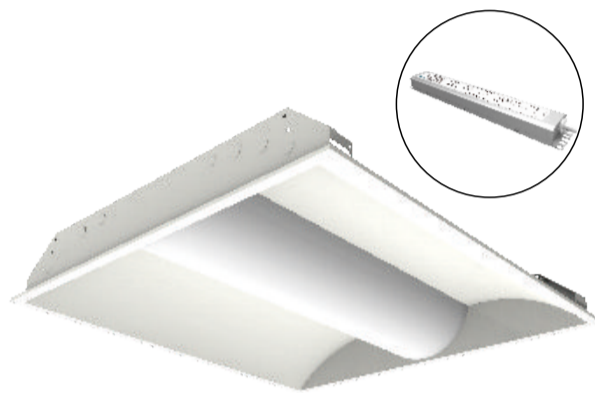
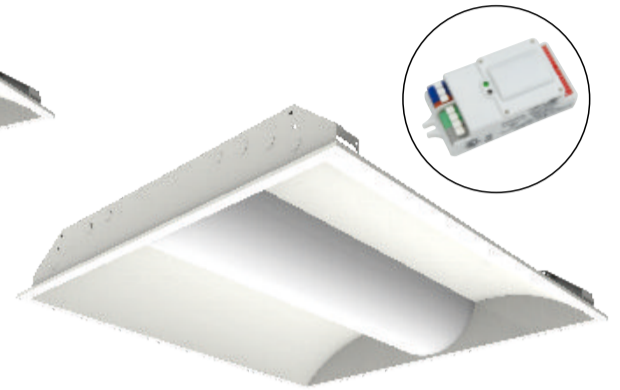


Features:

- High luminaire efficiency of 125-145 lm/w, compliable with DLC 4.0 Premium, energy savings over 60%
- Four types troffer to suit diifferent application: Standard, Photosensitive balance, Raddar sensor, Emergency Power Supply
- Photosensitive balance with daylight sensor,1-10V interface achieves daylight harvesting
- Auto switching between 1-10v dimming with LED driver and ballast



Application

Office, Shopping Mall, Hospital.



Technical Specification

Item No.	KBSTR020	KBSTR020	KBSTR030	KBSTR035	KBSTR050
Dimension(Ft)	2*2	2*2	1*4	2*4	2*4
Nominal Power (W)	20	32	30	35	50
Input Voltage (V)	AC100-277V 50/60HZ				
Luminous Efficiency (lm/W)	145 lm/W	125 lm/W	130 lm/W	145 lm/W	145 lm/W
Lumen Output (lm)	2900	4000	3900	5200	7200
LED Light Source	Epistar or equivalent				
CCT (K)	3000-5000K				
CRI	>80				
Power Factor	0.9				
Dimmable	0-10V dimming				
Beam Angle	120°				
IP Rating	IP40				
Body Material	PC				
Lifetime(Hrs)	50,000				
Warranty	5 Years				
Certification	UL/CUL/DLC				
Working Temperature	-20°C ~ 45°C				