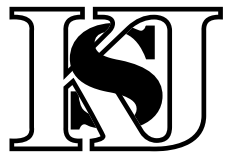
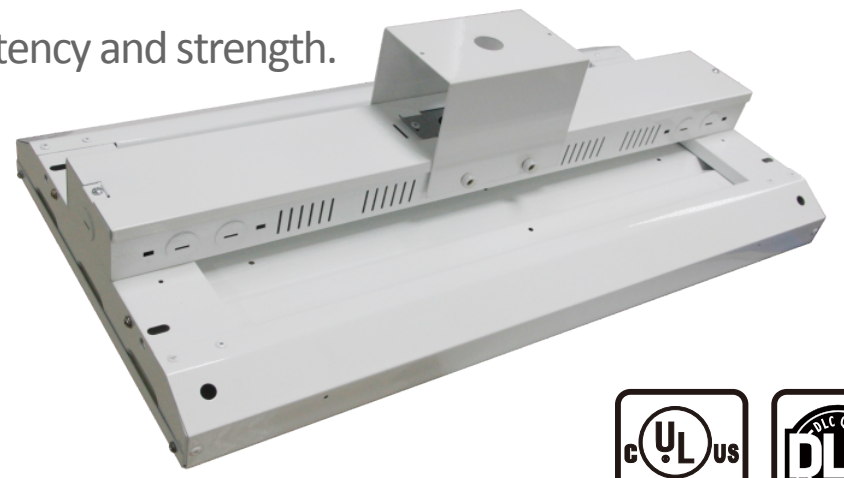


Luna LED Linear Bay Light



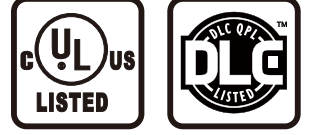
Features:

- Wide range of power and lumen output selection from 80W-325W.
- Available in 2' and 4' lengths, 2ft: Up to 220W, 4ft: Up to 325W.
- High luminaire efficiency up to 130lm/W.
- High transmission lens, over 90% efficiency.
- Low glare lens, improves visual comfort.
- Rigid aluminum housing with thick gauge steel enable greater consistency and strength.
- The Quick Wire access panel allows for easy power connection.
- 0-10V dimming , optional day light sensor.
- Pendant and suspension chain installations.






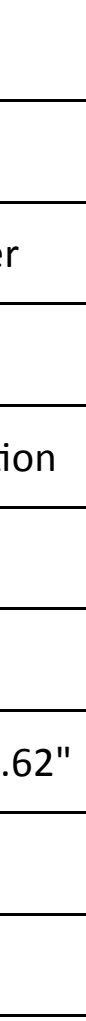
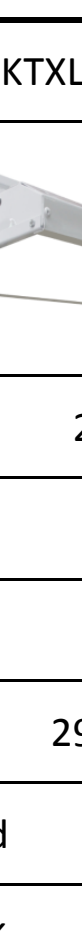
Application

Warehouse, Production facilities, Logistic centers, Exhibition centers.



Technical Specification

Content	KTXLH080	KTXLH110	KTXLH165
Ref.Photo			
Nominal Power (W)	80	110	165
Input Voltage (V)	AC100-277V		
Luminous Efficiency (lm/W)	130lm/W		
Lumen Output (lm)	10400	14300	21450
LED Light Source	Self-made led		
CCT (K)	4000K/5000K		
CRI	>80		
Power Factor	0.9		
Driver	Isolated driver		
Beam Angle	120°		
IP Rating	Dry/damp location		
Body Material	Aluminum		
Lifetime(Hrs)	50000		
Dimension(inch)	23.8" x 12.6" x 3.62"	23.8" x 12.6" x 3.62"	23.8" x 17.3" x 3.62"
Warranty	5 Years		
Certification	UL/DLC		
Working Temperature	-20°C ~ 40°C		

Content	KTXLH220	KTXLH165A	KTXLH225A	KTXLH325A
Ref.Photo				
Norminal Power (W)	220	165	225	325
Input Voltage (V)	AC100-277V			
Luminous Efficiency (lm/W)	130lm/W			
Lumen Output (lm)	28600	21450	29250	42250
LED Light Source	Self-made led			
CCT (K)	4000K/5000K			
CRI	>80			
Power Factor	0.9			
Driver	Isolated driver			
Beam Angle	120°			
IP Rating	Dry/damp location			
Body Material	Aluminum			
Lifetime(Hrs)	50000			
Dimension(inch)	23.8" x 17.3" x 3.62"	45.9" x 12.6" x 3.62"	45.9" x 12.6" x 3.62"	45.9" x 17.3" x 3.62"
Warranty	5 Years			
Certification	UL/DLC			
Working Temperature	-20°C ~ 40°C			